

AD
RF





AG
LF



AD
RF

AD
RF



PD
RH





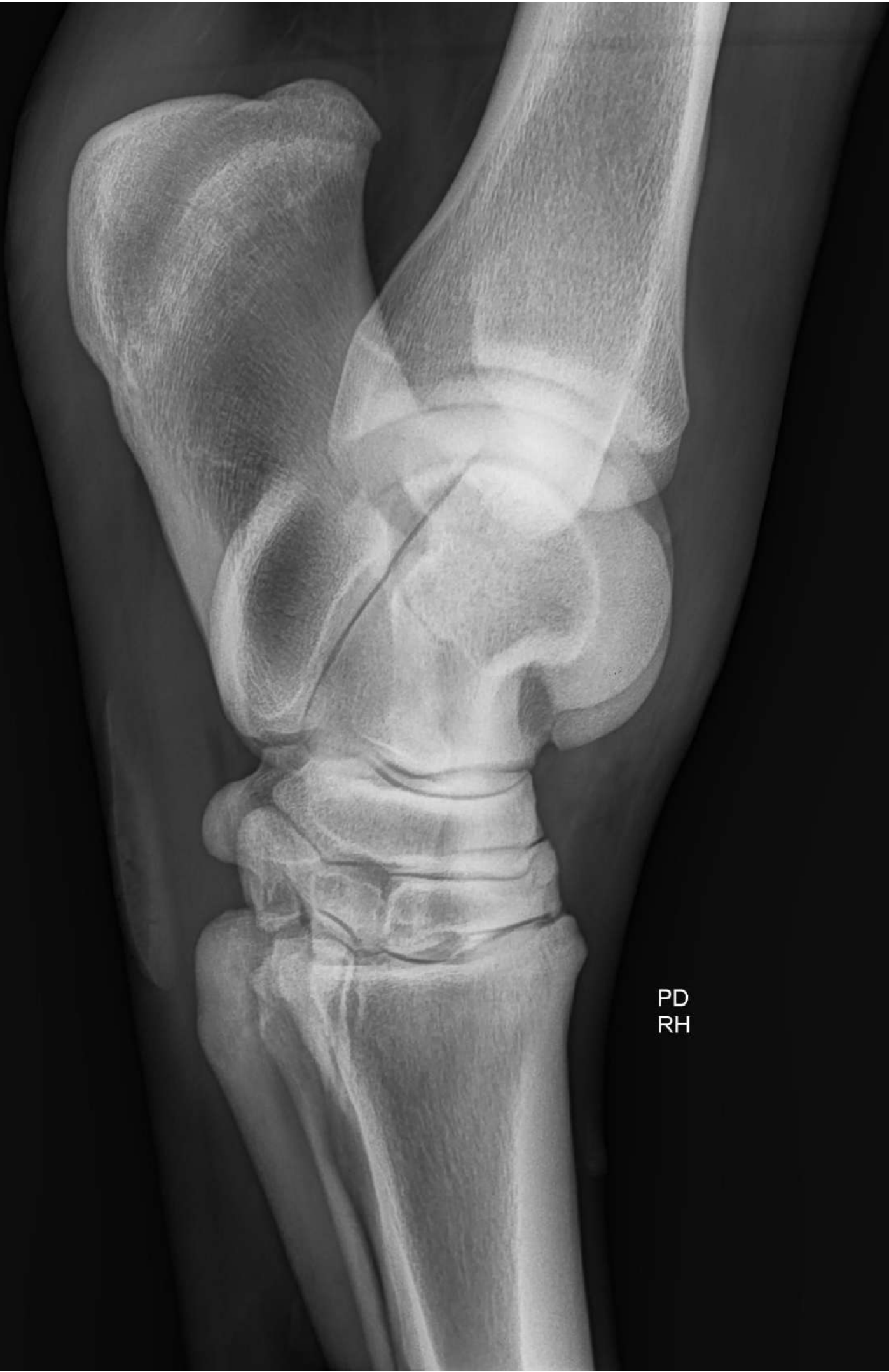
AD
RF



AG
LF



PD
RH



PD
RH



PD
RH

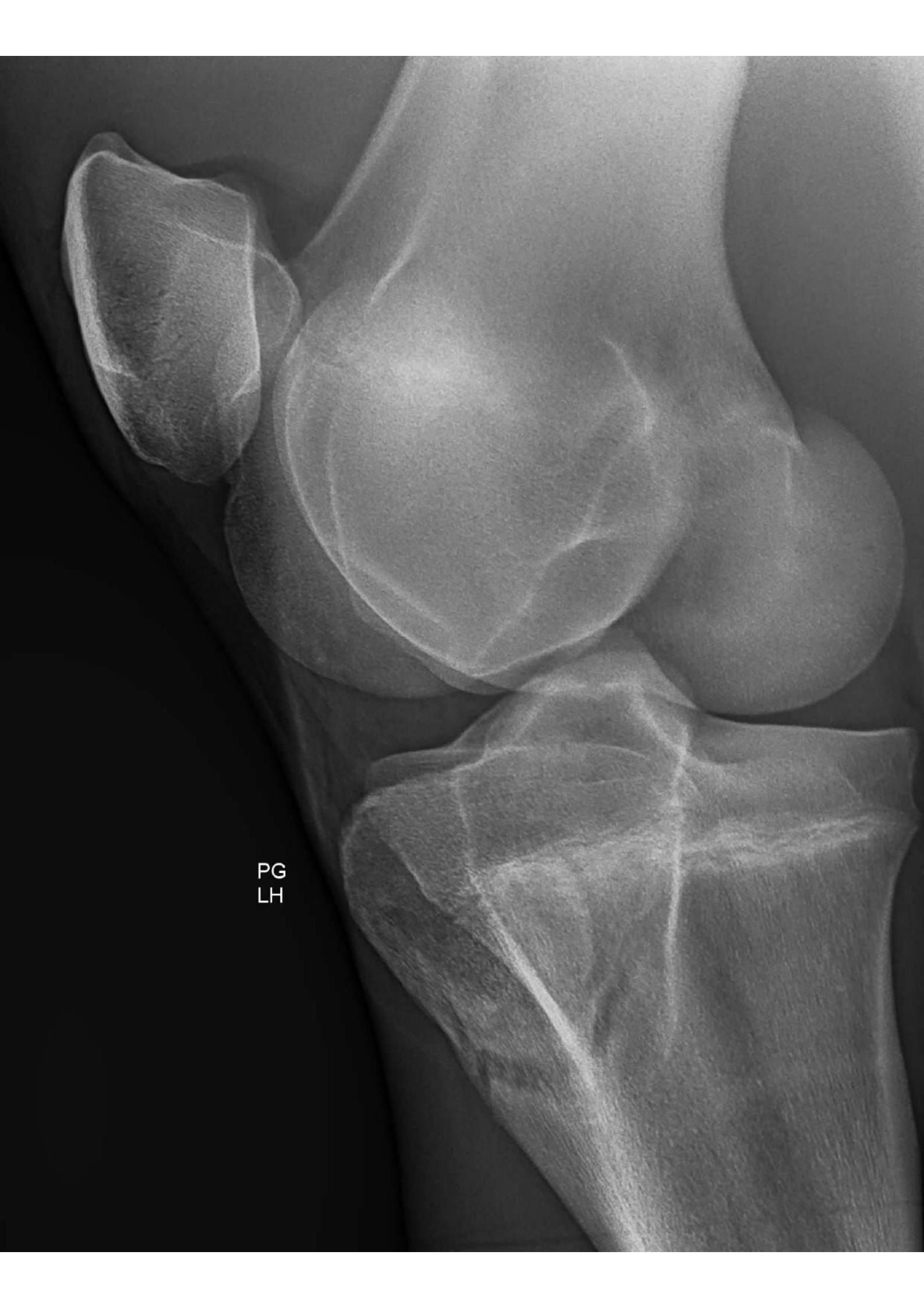


PD
RH



PG
LH

This is an anteroposterior (AP) radiograph of a knee joint. The image shows the distal femur at the top, the patella in the middle, and the proximal tibia at the bottom. The joint space is visible between the femur and tibia. The bones appear to be in a normal position with no obvious fractures or dislocations. The text 'PG' and 'LH' is located in the lower-left corner of the image.



PG
LH



PG
LH



AG
LF



AG
LF



PG
LH



PG
LH



PG
LH



PG
LH



PD
RH